



STREETWISE  
STYLE

---

**Gerflor**<sup>®</sup>  
theflooringgroup



## STREETWISE STYLE

Colourways

# STREETWISE STYLE

Streetwise Style is a textured loop pile carpet tile range featuring two designs; Trend and Flair. The range offers a choice of complementary colours that can be used alone or can be combined on the floor to create stylish and contemporary floor schemes. Streetwise Style is suitable for a wide range of environments including commercial office and education.

### CREATE YOUR DESIGN SPACE

#### ZONING

Define spaces such as walkways and desk areas by combining different tones to create a gradual transition across the floor from one zone to another.

#### FEATURE AREAS

Combine contrasting tones to create a feature with a strong design statement in specific areas such as social spaces and breakout areas.

#### MODULAR DESIGN

Consider the versatility of tile and choose from a range of different installation methods. Mix complementary tones together on the floor to create a unique design.

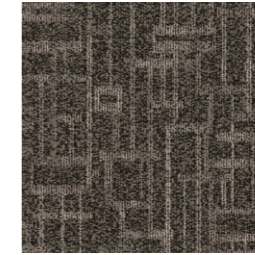
### CONTENTS

Colourways .....	1
Architects Studio Scheme .....	2-3
Floor Plan .....	4-5
Social Hub Scheme .....	6-7
Floor Plan .....	8-9
Commercial Office Scheme .....	10-11
Floor Plan .....	12-13

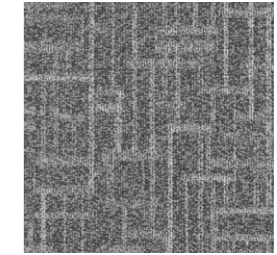
### TREND



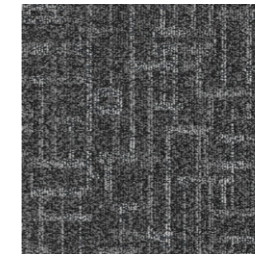
Trend | Tempo 00546  
LRV 11.40



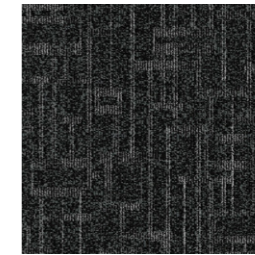
Trend | Rhythm 00547  
LRV 5.55



Trend | Focus 00573  
LRV 8.37



Trend | Cypher 00575  
LRV 6.63

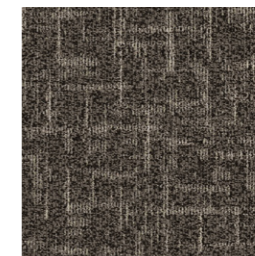


Trend | Canon 00578  
LRV 3.37

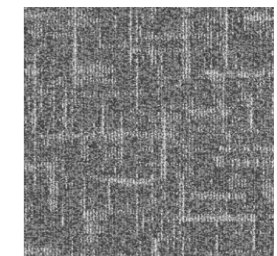
### FLAIR



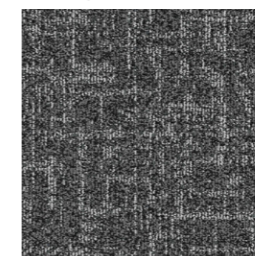
Flair | Tempo 06776  
LRV 12.52



Flair | Rhythm 06778  
LRV 5.56



Flair | Focus 06774  
LRV 8.91



Flair | Cypher 06779  
LRV 6.73



Flair | Canon 06770  
LRV 3.52



Broadloom  
Flair



Quarter Turn  
Trend  
Flair



Brick Bond  
Trend  
Flair

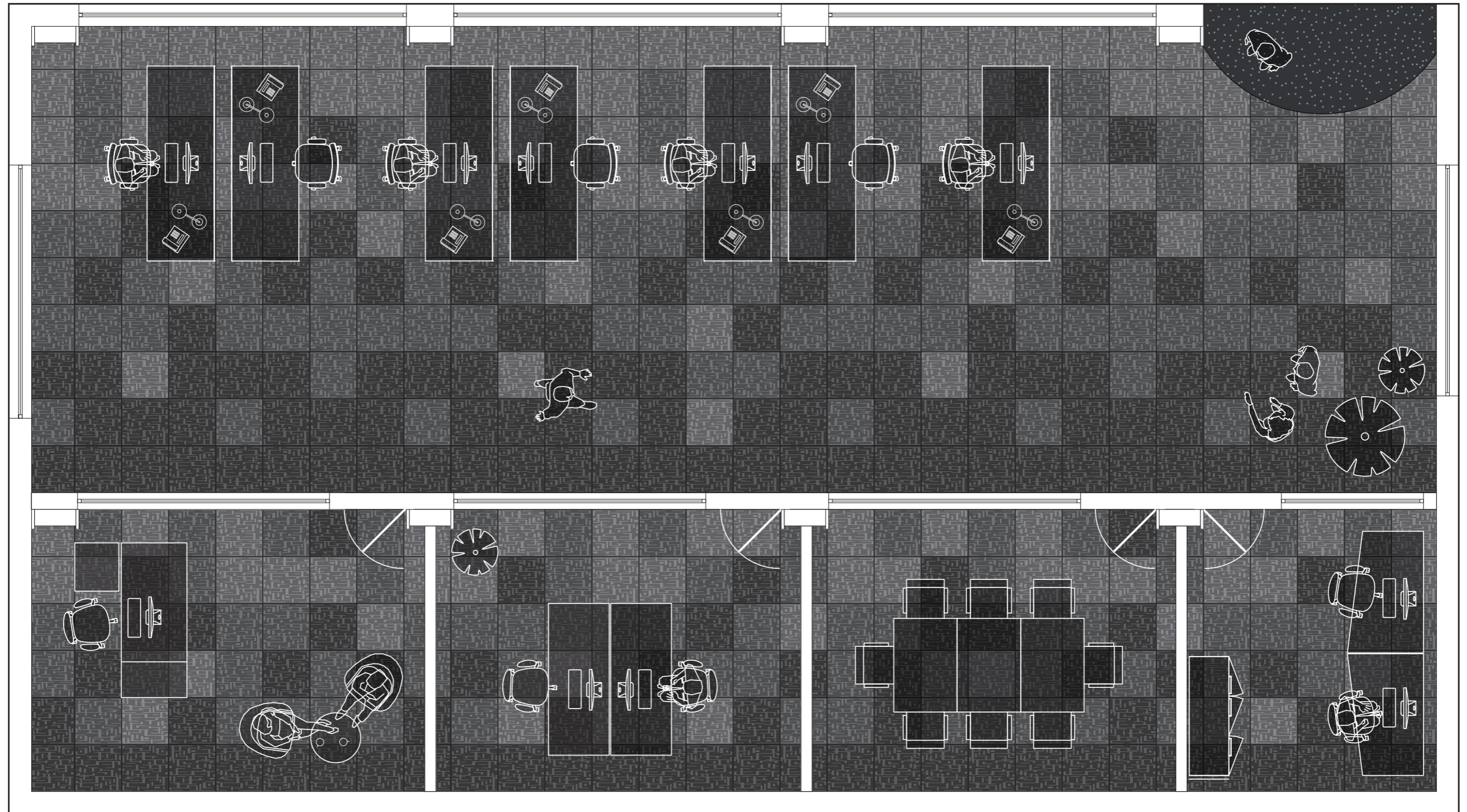


**Zoning**

Define spaces such as walkways and desk areas by combining different tones to create a gradual transition across the floor from one zone to another.

ARCHITECTS STUDIO FLOOR PLAN

Streetwise Style | Flair



Streetwise Style  
Flair | Focus 06774  
(Installed broadloom)

Streetwise Style  
Flair | Cypher 06779  
(Installed broadloom)

Streetwise Style  
Flair | Canon 06770  
(Installed broadloom)

Secondary  
Barrier Matting  
Boulevard 6000

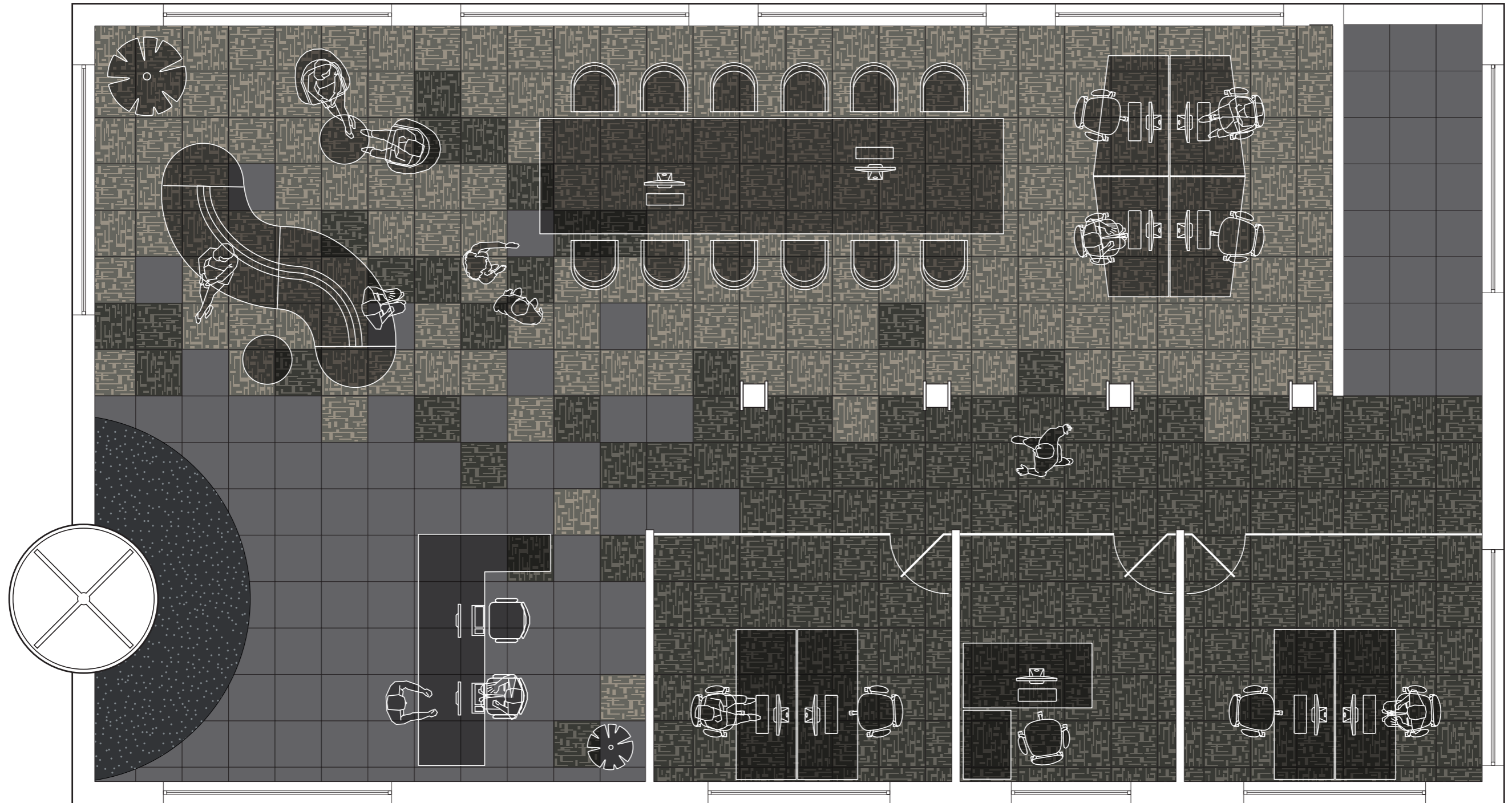


**Feature Areas**

Combine contrasting tones to create a feature with a strong design statement in specific areas such as social spaces and breakout areas.

SOCIAL HUB FLOOR PLAN

Streetwise Style | Trend



-  Streetwise Style  
Trend | Tempo 00546  
(Installed quarter turn)
-  Streetwise Style  
Trend | Rhythm 00547  
(Installed quarter turn)
-  Secondary  
Barrier Matting  
Boulevard 6000

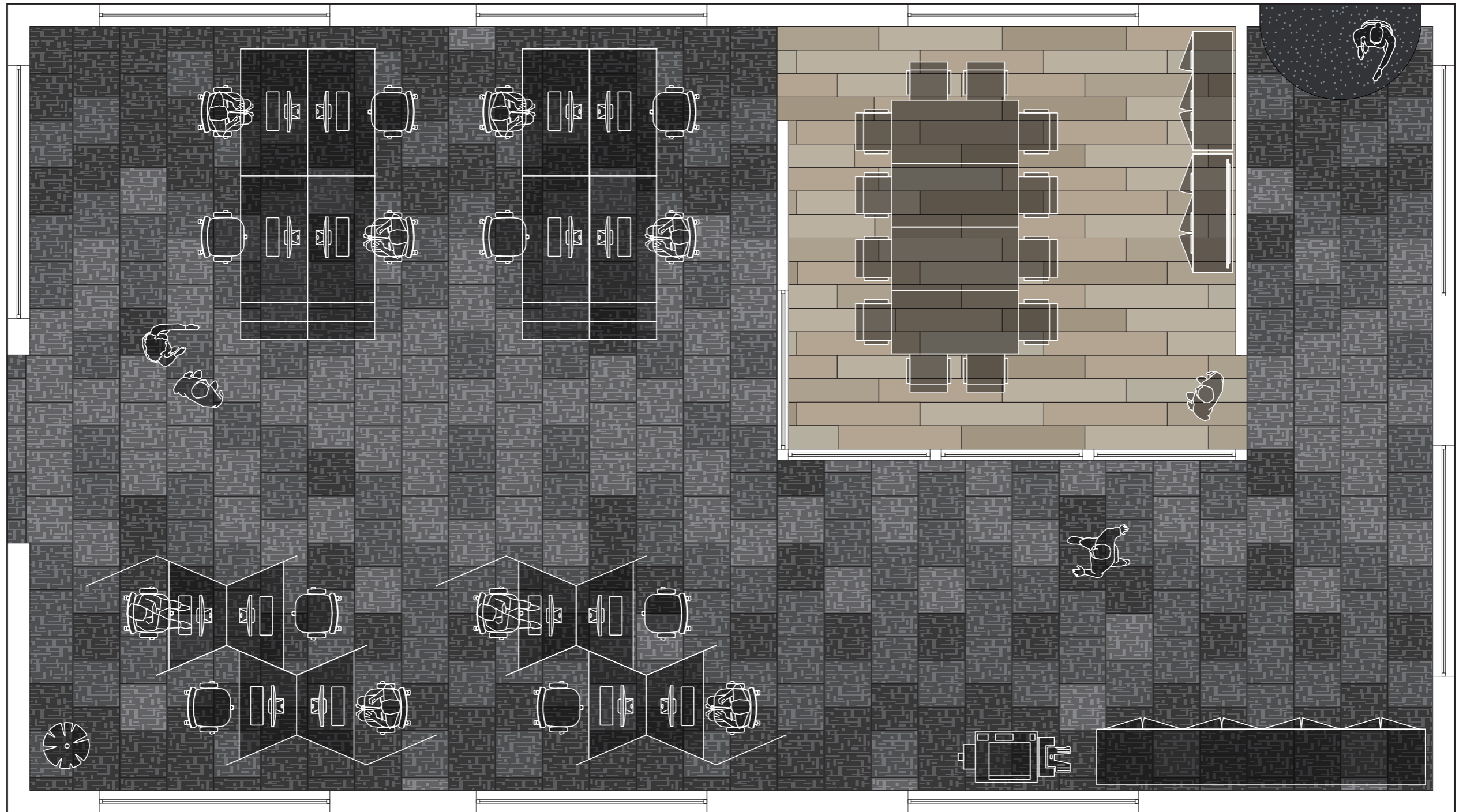


**Modular Design**

Consider the versatility of tile and choose from a range of different installation methods. Mix complementary tones together on the floor to create a unique design.

COMMERCIAL OFFICE FLOOR PLAN

Streetwise Style | Trend



Creation 55  
Looselay LVT  
Ranch 0456  
(Installed 1/3 Drop)

Streetwise Style  
Trend | Focus 00573  
(Installed brick bond)

Streetwise Style  
Trend | Cypher 00575  
(Installed brick bond)

Streetwise Style  
Trend | Canon 00578  
(Installed brick bond)

Secondary  
Barrier Matting  
Boulevard 6000



Uniclass Pr_35_57_11_62
CI/SfB (43) Tn6

STREETWISE STYLE	
TREND	FLAIR

## SPECIFICATION

Product Format	Tile	Tile
Product Dimensions	500mm x 500mm	500mm x 500mm
Product Construction	Tufted Loop Pile	Tufted Loop Pile
Surface Yarn	100% Solution Dyed Nylon	100% Solution Dyed Nylon
Total Carpet Weight	4614 g/m <sup>2</sup>	4334 g/m <sup>2</sup>
Tufted Pile Weight	500 g/m <sup>2</sup>	520 g/m <sup>2</sup>
Gauge	1/10" (39.4 per dm)	1/10" (39.4 per dm)
Stitches	52.2 per dm	45.2 per dm
Primary Backing	Non-woven	Non-woven
Secondary Backing	Bitumen (contains 75% recycled material)	
Total Carpet Thickness	6.3mm	6.1mm

## PERFORMANCE SPECIFICATION

Classification BS EN 1307	Class 33	Class 33
Castor Chair BS EN 985 Test A	Pass	Pass
Static Electricity ISO 6356	<2kV	<2kV
Impact Sound Insulation EN ISO 10140-3	22dB	21dB

## FLAMMABILITY

BS EN 13501-1	Class Bfl-s1	Class Bfl-s1
---------------	--------------	--------------

## WARRANTIES

Wear Warranty	12 Year	12 Year
Anti-static Warranty	10 Year	10 Year

## ADHESIVES

For recommended adhesives contact Technical Services.



The information contained in this document is valid from 1/3/2024 and is subject to change at any time without notice.

## Contact us to order free samples

### UNITED KINGDOM:

Gerflor Flooring UK Ltd  
Park Green, Macclesfield,  
Cheshire, SK11 7LZ  
Tel: 01625 428922  
E-mail: contractuk@gerflor.com  
Visit: www.gerflor.co.uk

### IRELAND:

Gerflor Ltd  
Ballybay Road, Co. Monaghan,  
A81 YD83, Republic of Ireland  
Tel: +353 (0) 42 966 1431  
E-mail: gerflorirl@gerflor.com  
Visit: www.gerflor.ie